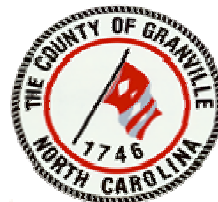


# Camp Butner

## Joint Land Use Study

---

# Public Involvement Survey Results



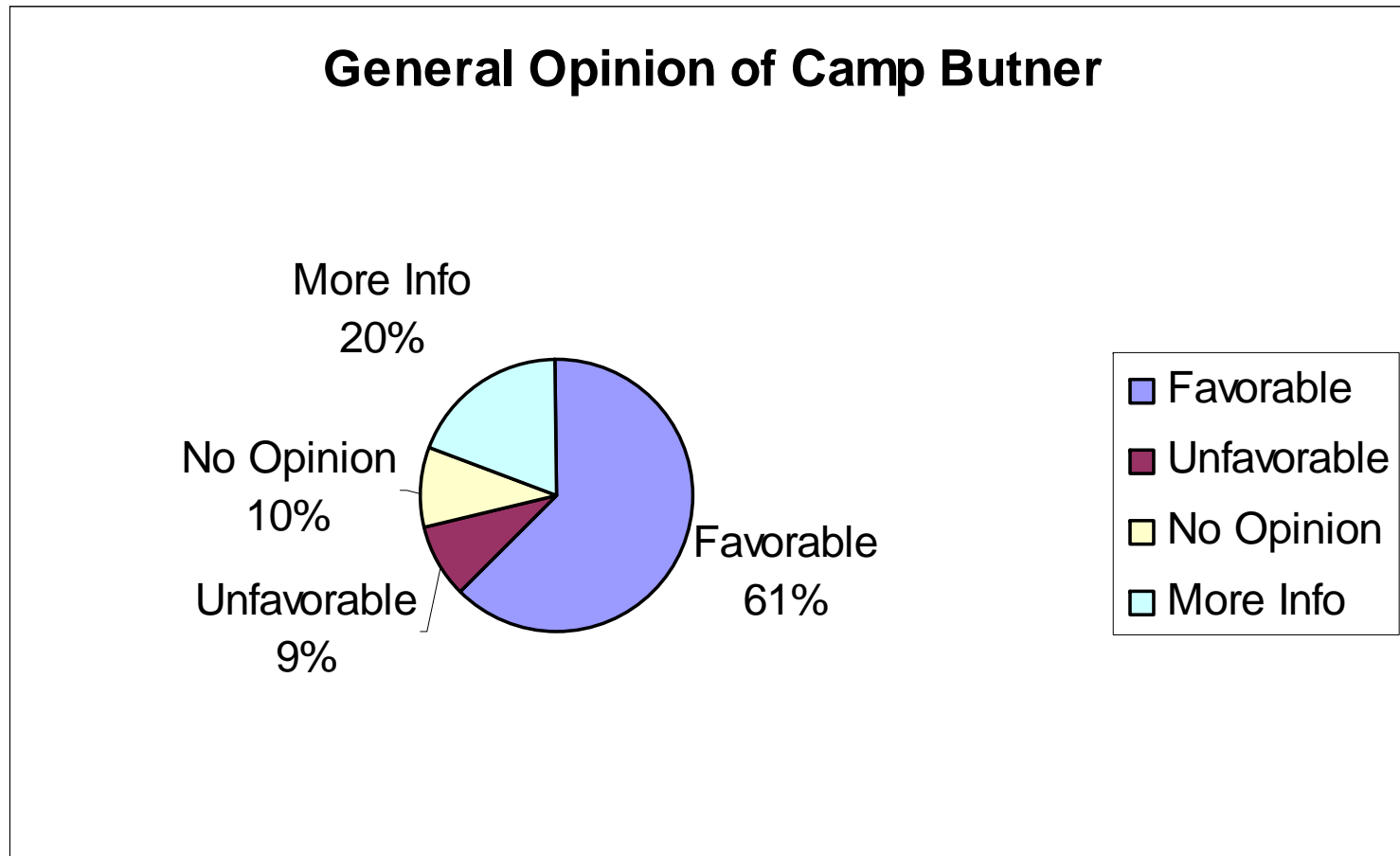
# JLUS Survey Results: Overview

---

- Survey released in September 2008
  - Direct mail
  - Online
  - 85 total responses

# Q1-2: View of Camp Butner

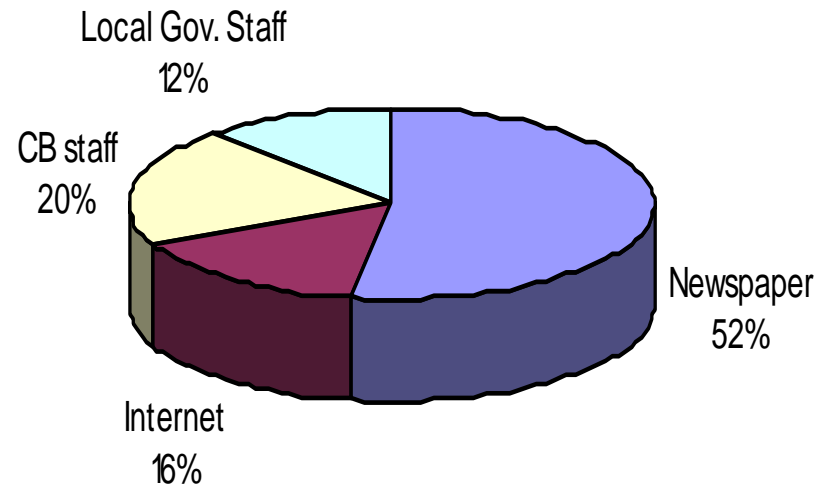
---



# Q 3: Info Source

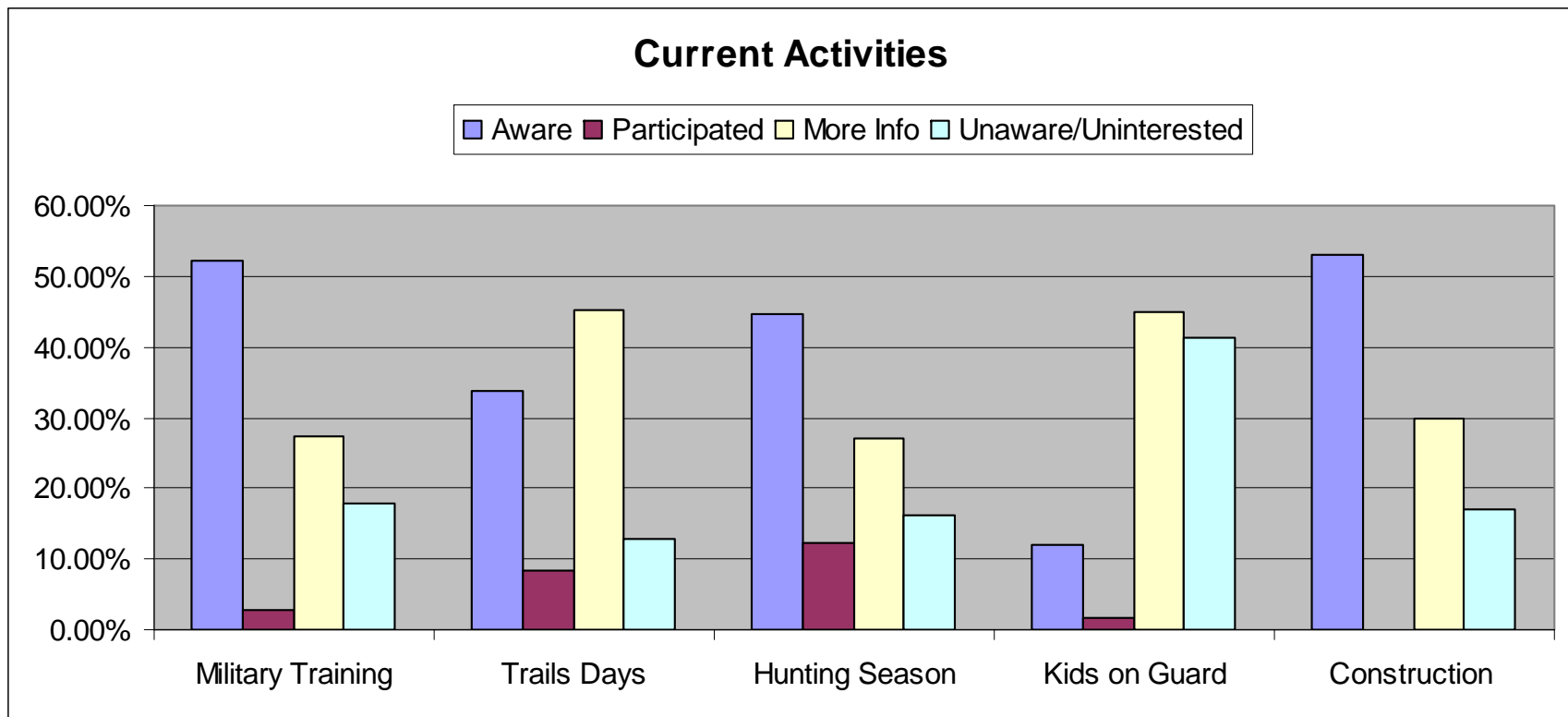
---

## Camp Butner Information Source

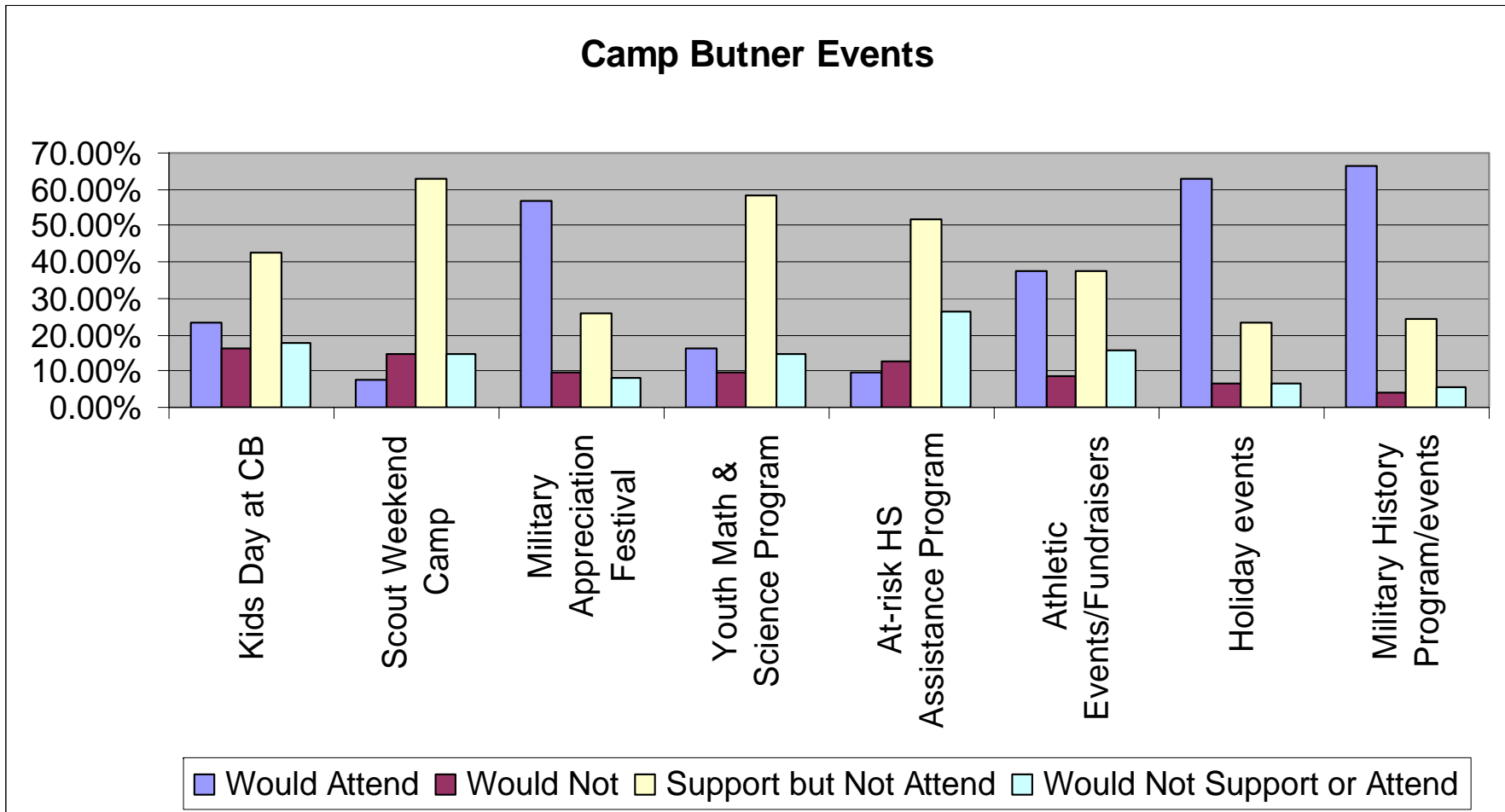


■ Newspaper ■ Internet ■ CB staff ■ Local Gov. Staff

# Q4: Have you heard of or participated in any of these events at Camp Butner?

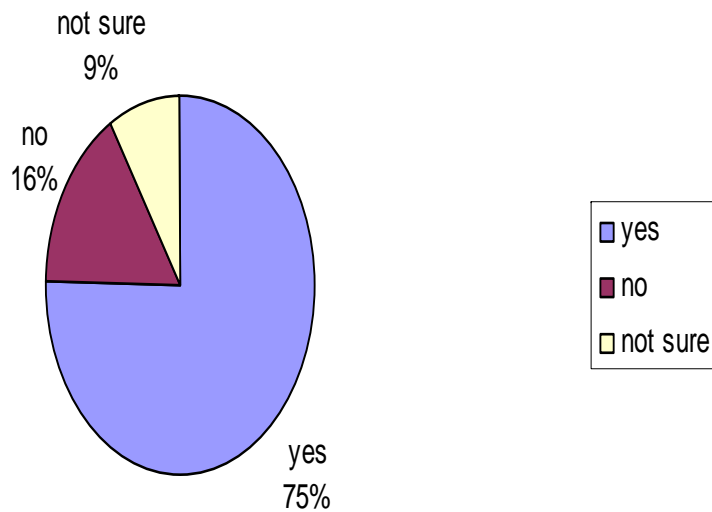


# Q5: How Interested would you be in the following events at or sponsored by Camp Butner?

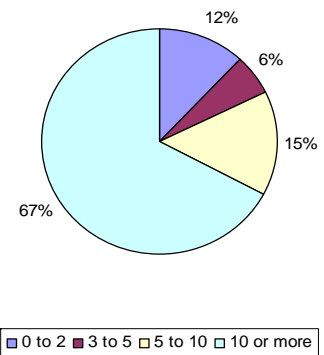


# Q7,8,9: Property Info

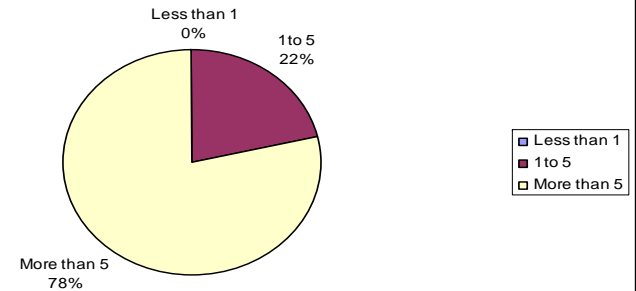
### Live within Study Area



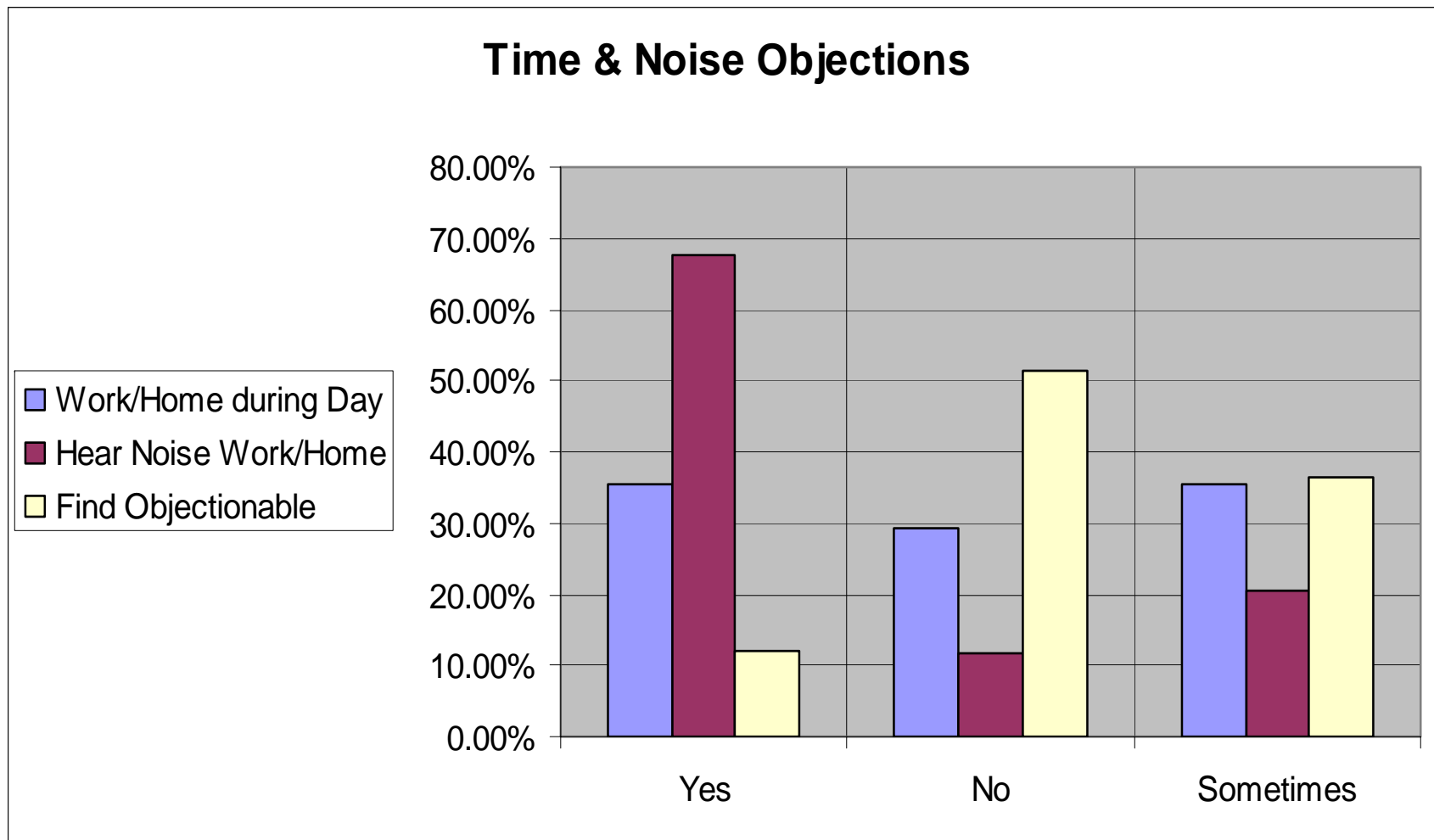
### Length of stay/ownership



### Property Size



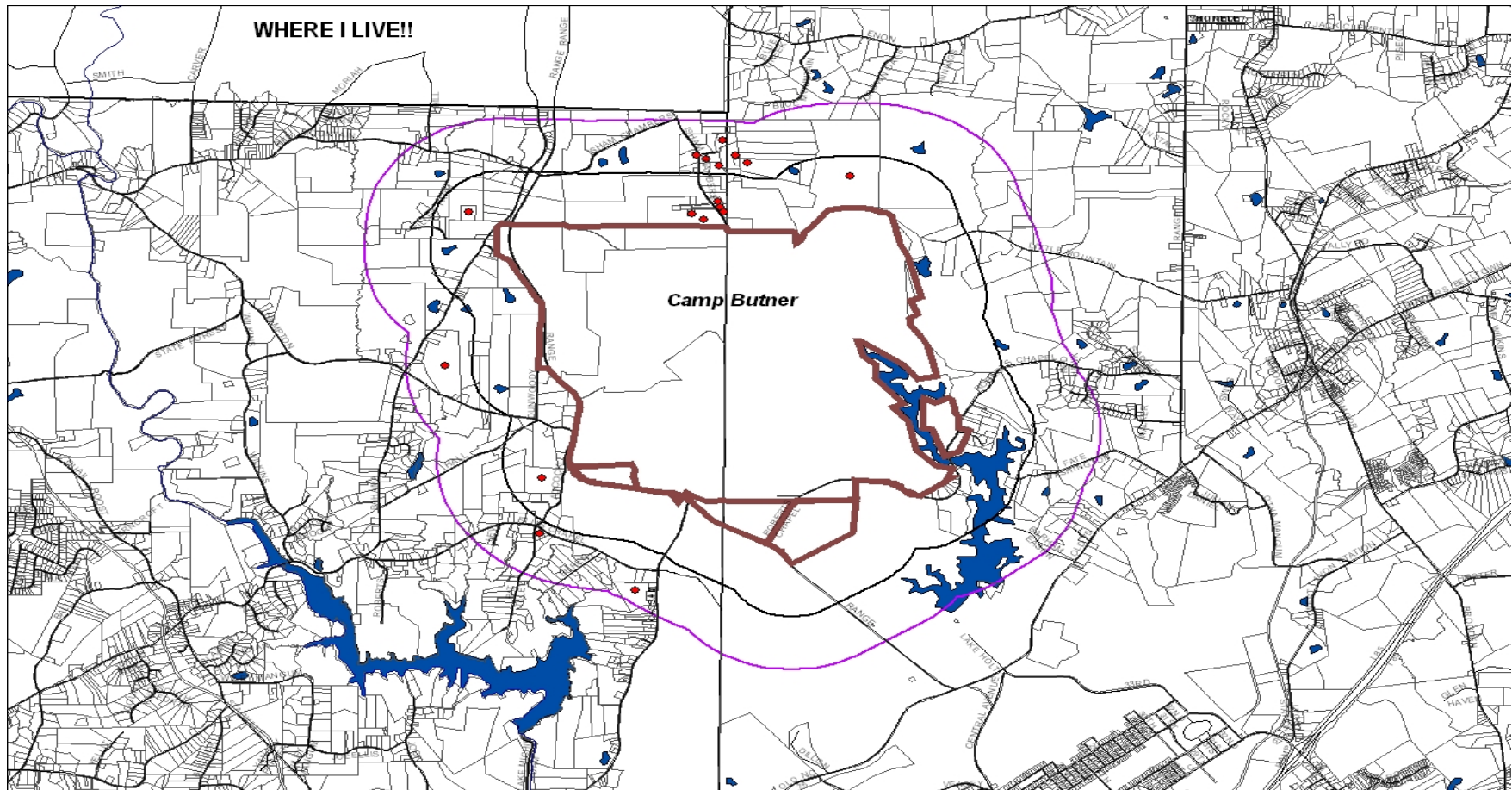
# Q10,11,12: Opinion of Noise



# Q27: Want to be kept informed?

---

- 25 email addresses collected



# Survey Observations

---

- ❑ Camp Butner is overall favored
- ❑ Need for increased public awareness
- ❑ Most citizens have lived here for a substantial time (10+ years)
- ❑ Own lots greater than 5 acres

# Survey Observations

---

- Your observations?
- Comments?
- Questions?