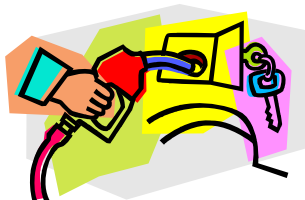


CAMP BUTNER'S IMPACT ON THE LOCAL ECONOMY (2007)

Each year hundreds of military personnel come to Camp Butner to receive military training. Camp Butner also serves as training grounds for NC State Highway Patrol and local police departments. Several marksmanship competitions are hosted at the site each year, and community events held at the site attract visitors from neighboring counties, towns and states. Some of these people stay for a few days; others stay for up to a week or two. Visitors stay at local hotels; some even bring their families. Many of them dine out in area restaurants, fill their cars with gas, and stop in at local stores or shops for various goods. All these activities combine with the full-time staff housed at Camp Butner to pump over \$800,000 into the local economy each year.



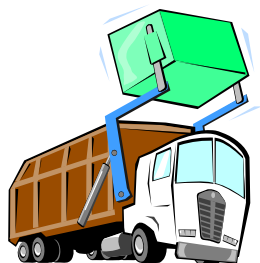
Lodging: Visitors to Camp Butner spend \$50,000 a year at area hotels.



Gas: Last year, Camp Butner staff and visitors spent about \$58,000 at local gas stations.



Food: Last year, full-time Camp Butner employees spent \$35,000 locally to eat



Dumpsters: Camp Butner spent \$7337 last year on local companies servicing dumpsters.



Tenant Impact: It is estimated that each soldier that visits Camp Butner causes a \$7 impact; this adds up to over \$270,000!

Employee Purchases: It is estimated that staff from Camp Butner spend \$64,000 each year at local stores, pharmacies, and restaurants for personal items.



Pest Control: Nearly \$500 was spent locally last year on pest control for Camp Butner.pest



Propane: In 2007, Camp Butner purchased \$23,000 worth of propane.

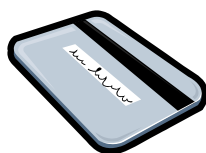


Electricity: In 2007, Camp Butner spent \$31,700 on electricity.

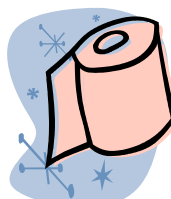
TOTAL:
In 2007, Camp Butner activities contributed \$850,413 to the local economy!



Environmental Protection: In 2007, Camp Butner spent \$250,000 on environmental activities such as erosion control, forestry care, water quality sampling, and environmental studies.



Credit Card: Approximately \$25,000 a year is spent with the Camp Butner credit card to purchase miscellaneous items.



Portable Toilets: In 2007, Camp Butner spent \$15,000 on portable toilets.