



# NC MOVES 2050

CONNECTING YOUR COMMUNITY,  
YOUR VOICE AND YOUR FUTURE

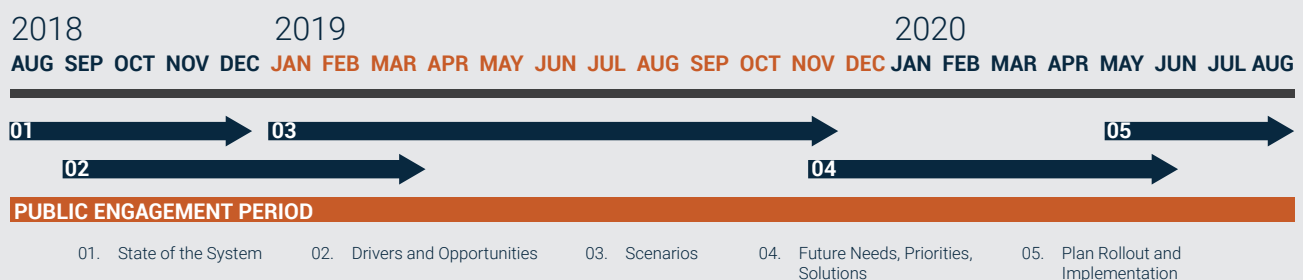
## STUDY OVERVIEW & PURPOSE

NC MOVES 2050 WILL CONTINUE TO SUPPORT NORTH CAROLINA'S ECONOMY AND ENHANCE QUALITY OF LIFE

*The N.C. Department of Transportation is conducting an update to its long-range transportation plan to help guide North Carolina's future transportation policies and investments. Called NC Moves 2050, the plan provides a 30-year transportation blueprint for the state.*



## STUDY TIMELINE

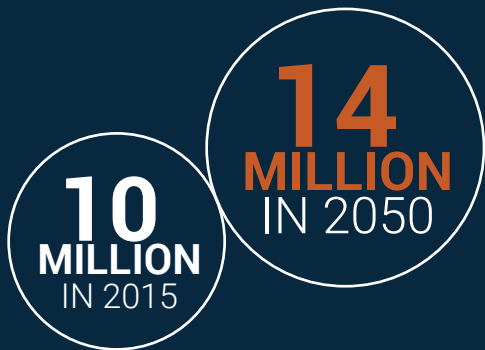




## NORTH CAROLINA'S POPULATION GROWTH

The population of North Carolina has grown from 6.7 million people in 1990 to 10 million people in 2015, according to the North Carolina Office of State Budget and Management. This is a total growth rate of 51 percent. Over the same time period, the population of the U.S. has increased by 29 percent.

According to an analysis conducted by the study team, this trend is expected to continue, with North Carolina anticipated to add nearly 4 million more people by 2050. This would make North Carolina the 8th most populous state by 2050.



## THE NEXT 50 YEARS

Life looked a lot different 50 years ago. Air travel was a luxury, families owned only one car, milk was delivered, kids walked to school and cellphones didn't even exist.

Fast-forward to today where air travel is fairly common, families own multiple vehicles, most anything can be delivered, and children ride the bus or are driven to school.

What might the world look like in the next 50 years? What role will transportation play in that future? What does North Carolina need to do to be ready to take on new challenges?

These are some of the questions that will be answered in the NC Moves 2050 transportation plan.

## NORTH CAROLINA FACTS

NCDOT MAINTAINS MORE THAN 80,000 MILES OF HIGHWAY.  
(TEXAS IS THE ONLY STATE THAT HAS MORE)



IN 2017, CHARLOTTE DOUGLAS INTERNATIONAL AIRPORT RANKED 10TH NATIONWIDE IN NUMBER OF PASSENGERS.\*\*



NORTH CAROLINA HAS 3,258 MILES OF FREIGHT RAILROAD.\*



1.1% OF NORTH CAROLINIANS USE PUBLIC TRANSPORTATION TO GET TO WORK.\* (COMPARED TO A USA AVERAGE OF 5.2 PERCENT)



ELECTRIC SCOOTERS HAVE TAKEN MANY NORTH CAROLINA CITIES BY SURPRISE AS A NEW WAY TO TRAVEL.



AUTONOMOUS AND CONNECTED VEHICLES ARE EXPECTED TO CHANGE HOW, WHEN AND WHERE WE TRAVEL.



## HOW TO GET INVOLVED

Thirty years sounds far away; however, the time to start planning is now. There will be several opportunities for public input throughout the two-year study process.

Announcements will occur for statewide outreach opportunities, web-based surveys and interactive maps of North Carolina where citizens can share their thoughts about North Carolina's transportation system's future by region.

## BE A PART OF THE FUTURE!

#NCMOVES      
NCDOT.GOV/NCMOVES

\*Information taken from the U.S. Department of Transportation Bureau of Transportation Statistics, 2016. \*\*Information from CLTAirport.com